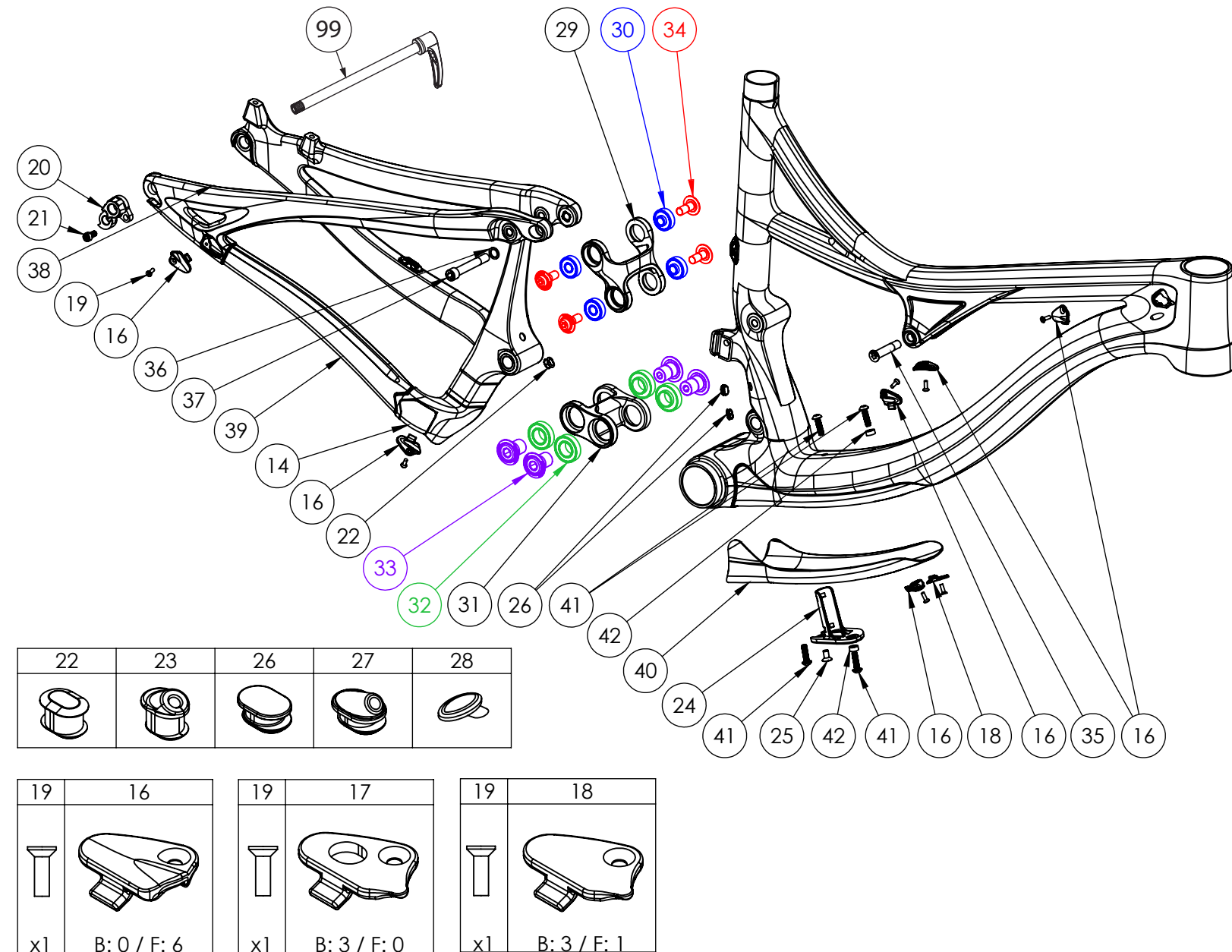


MACH 4 CV2

NUMBER	PART NAME	DESCRIPTION	Torque	*
16	FP-CLM-MECH-FRM-V1	Internal Routing Cable Clamp		
17	FP-CLM-DI2-FRM-V1	Internal Routing Di2 Clamp		
18	FP-CVR-MECH-FRM-V2	Internal Routing Hole Cover		
19	FP-SCW-FLT-M3*10	M3x10 Cable Clamp Screw (Included w/ Clamp)		
20	FP-RDH-TA-12MM-BLK-V3	Rear Derailleur Hanger 12mm TA		
21	FP-SCW-SCK-M5*10	M5x10 Rear Derailleur Hanger Screw	7 Nm (5 lb-ft)	□
22	FP-PLG-DI2-7*8*5	7x8mm Di2 Plug Ext'd		
23	FP-GDE-DI2-7*8*5*2.5	7x8mm Di2 Wire Guide Ext'd		
24	FP-CVR-DI2-DT-V1	Di2 Downtube Battery Holder		
25	FP-SCW-FLT-M5*16	M5x16 Di2 DT Battery Cover Screws (Included with cover)		
26	FP-PLG-DI2-7*8*2.5	7x8mm Di2 Plug		
27	FP-GDE-DI2-7*8*2.5*2.5	7x8mm Di2 Wire Guide		
28	FP-PLG-MECH-5.5MM	5.5mm Rubber Cable Plug		
29	FP-LNK-UL-50MM-V2-R1	50mm Out-to-Out Upper Link (Low Profile)		
30	FP-BRG-608-LLUMAXE	22mm OD 608 Ext'd Upper Link Bearing		
31	FP-LNK-LL-BLK-V3-R1	34mm Out-to-Out Lower Link		
32	FP-BRG-6902-LLUMAXECN	28mm 6902 Ext'd Max-E Bearing		
33	FP-BLT-M14*20-BLK-V2	M14x20 Lower Link Bolt	35 Nm (27 lb-ft)	□
34	FP-BLT-M8*20-BLK	M8x20 Upper Link Bolt	13 Nm (10 lb-ft)	□
35	FP-BLT-M8*38-BLK	M8x38 Front Shock Bolt	13 Nm (10 lb-ft)	●
36	FP-WSH-8I*120*1W	M8 Shock Bolt Washer		
37	FP-BLT-M8*55-BLK	M8x55 Rear Shock Bolt	13 Nm (10 lb-ft)	●
38	FP-PRO-M4CV2-SS-V2-R1	Mach 4 Carbon V2 Seatstay Guard		
39	FP-PRO-M4CV1-CS-V1-R1	Mach 4 Carbon V2 Chainstay Guard		
40	FP-PRO-M4CV1-DT-XS-V1-R1	Mach 4 Carbon Downtube Guard (X-Small)		
40	FP-PRO-M4CV1-DT-SM-V1-R1	Mach 4 Carbon Downtube Guard (Small)		
40	FP-PRO-M4CV1-DT-M-V1-R1	Mach 4 Carbon Downtube Guard (Medium)		
40	FP-PRO-M4CV1-DT-L-V1-R1	Mach 4 Carbon Downtube Guard (Large)		
40	FP-PRO-M4CV1-DT-XL-V1-R1	Mach 4 Carbon Downtube Guard (X-Large)		
41	PIVOT WB BOLTS V2	M5x0.8x18 Zinc Plated Steel Water Bottle Bolts		
42	PIVOT WB BOLT SPACER	M5 Water Bottle Bolt Spacer		
99	DT SWISS 148 RWS	148X12mm RWS Thru Axle		



* ○ = grease ● = anti-seize ◐ = anti-seize or grease □ = loctite 243