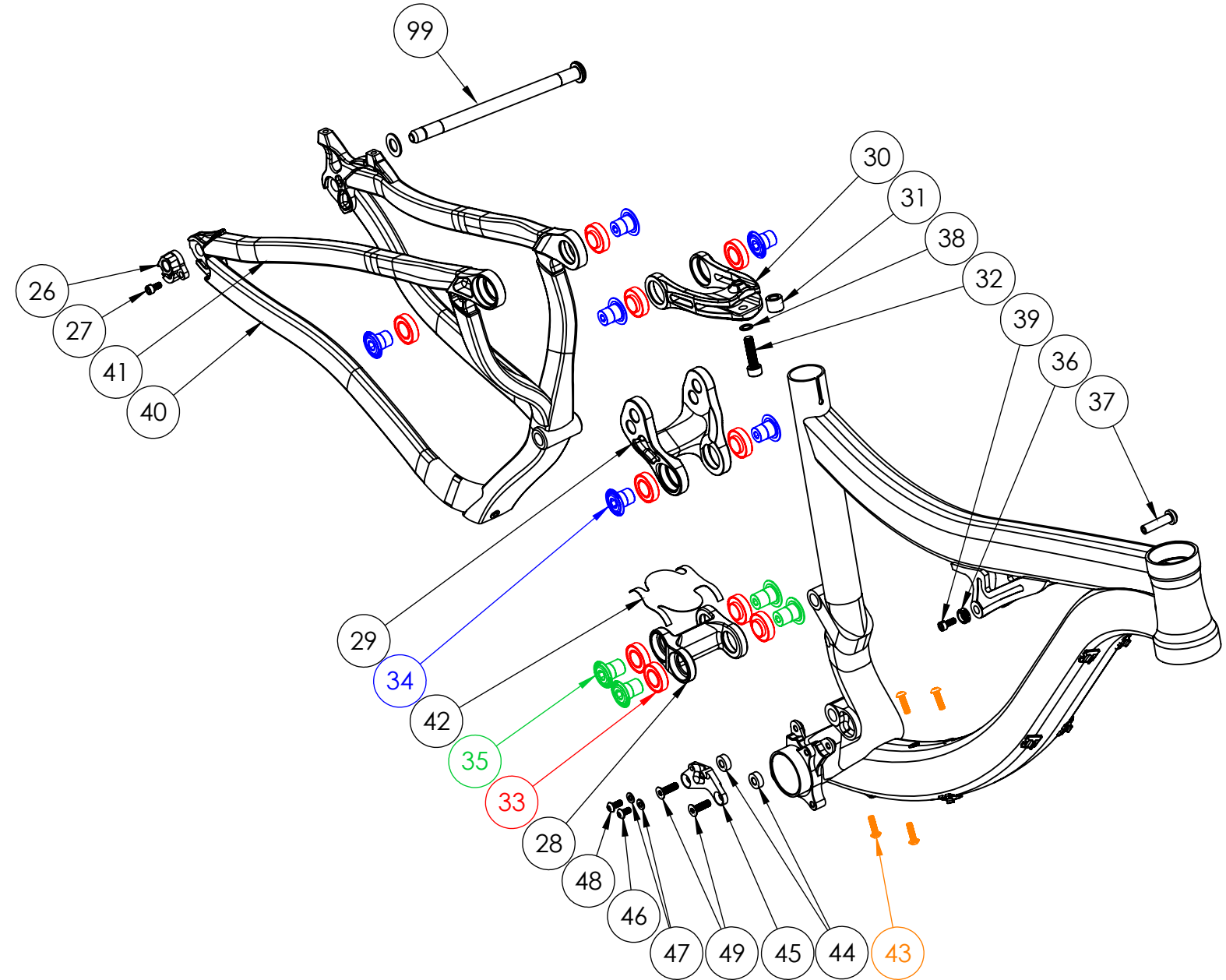


SWITCHBLADE ALLOY

NUMBER	PART NAME	DESCRIPTION	Torque	*
26	FP-RDH-TA-12MM-BLK-V3	Rear Derailleur Hanger 12mm TA		
27	FP-SCW-SCK-M5*10	M5x10 Rear Derailleur Hanger Screw	7 Nm (5 lb-ft)	○
28	FP-LNK-LL-BLK-V4-R1	34mm Out-to-Out Lower Link V2 (+6mm Front Width)		
29	FP-LNK-UL-67MM-V1-R1	67mm Upper Link		
30	FP-CLV-94MM-V2-R1	94mm Clevis		
31	FP-PIN-CLV-M8*150-BLK-R2	M8 Clevis Shock Adapter Pin		
32	FP-SCW-SCK-M8*30-R1	M8x30 Clevis Screw	28 Nm (21 lb-ft)	●
33	FP-BRG-6902-LLUMAXECN	28mm 6902 Ext'd Max-E Bearing	**	
34	FP-BLT-M14*17-BLK	M14x17 Upper Link Bolt	35 Nm (27 lb-ft)	□
35	FP-BLT-M14*20-BLK-V2	M14x20 Lower Link Bolt	35 Nm (27 lb-ft)	□
36	FP-WSH-5I*140*5W-BLK	M5 Custom Shock Mount Washer		
37	FP-PIN-SHK-M5*80-BLK-R2	8mm O.D. M5 Shock Mount Pin		●
38	FP-WSH-8I*120*1W	M8 Shock Bolt Washer (For Clevis Screw)		
39	FP-SCW-SCK-M5*12	M5X12 Front Shock Pin Screw	7 Nm (5 lb-ft)	□
40	FP-PRO-SBA-CS-V1-R1	Silicone Chainstay Protector		
41	FP-PRO-SBA-SS-V1-R1	Transparent Tape Seatstay Protector		
42	FP-PRO-34MM-LL-V1-R1	34mm Lower Link Protector		
43	PIVOT WB BOLTS V2	M5x0.8x18 Zinc Plated Steel Water Bottle Bolts		
44	FP-WSH-SPC-M6*5.5	M6x5.5 Spacer		
45	FP-FDM-ETYPE-V2-R1	E-type FD Mount Adapter		
46	FP-SCW-BTN-M5*10	M5x10 E-type FD Mounting Screw	3 Nm (26 in-lb)	□
47	FP-WSH-5I*100*1W	M5 E-type FD Mounting Washers		
48	FP-SCW-BTN-M5*12	M5x12 E-type FD Mounting Screw	3 Nm (26 in-lb)	□
49	FP-SCW-FLT-M6*18	M6x18 E-type FD Mount Adapter Screw	10 Nm (7 lb-ft)	□
99	157MM THROUGH AXLE V3	12x157mm Thru Axle w/ Washer		○



** See Bearing Assembly Procedure located in the tech specs section at www.pivotcycles.com

* ○ = grease ● = anti-seize ● = anti-seize or grease □ = loctite 243